

Phoenix  
**Augusta 16562A**



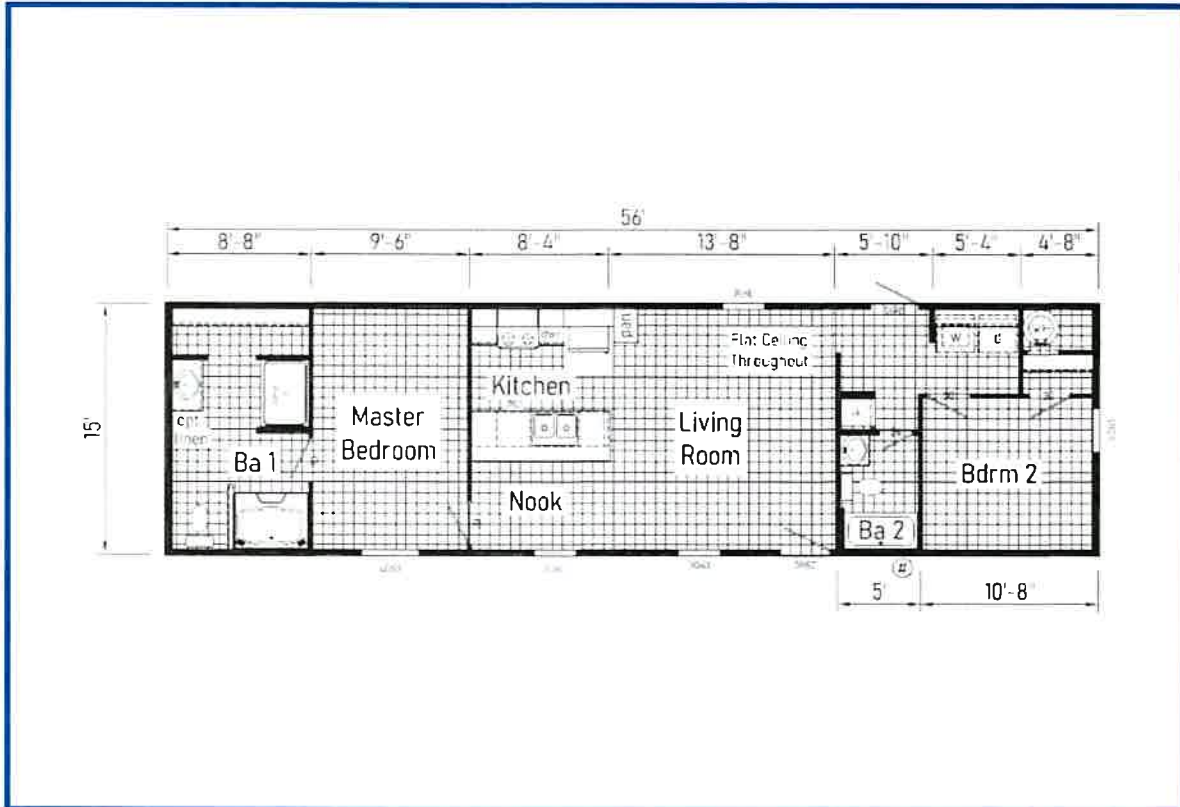
- Ac Ready: Yes
- Front Door: Steel Front Door w/Storm / Shutters Front Door Side
- Window Type: Thermopane Windows
- Water Heater: 40 Gallon Electric Water Heater
- Bathroom Flooring: Vinyl Flooring T/O
- Kitchen Flooring: Vinyl Flooring T/O
- Kitchen Dishwasher: Yes
- Exterior Lighting: Exterior Lights - Front and Rear Door
- Insulation Zone: Zone 3 R30-11-11 Insulation
- Floor Joists: 2x8 Floor Joist
- Other: Exterior Faucet
- Rear Door: Cottage Rear Door
- Ceiling Texture: 8ft Flat Ceilings T/O / Stomped Ceiling
- Water Shut Off Valves: Whole House Water Cut Off
- Bathroom Shower: Garden Tub and Sperate Shower
- Kitchen Faucets: Metal faucets
- Kitchen Cabinetry: Module Craft Cabinet System / 30" Overhead / Adjustable Shelves / Shelf above Refrigerator / Pantry / Utility Shelf
- Interior Lighting: LED Can Lights T/O

Due to the fact that Cavco Hamlet continuously updates and modifies its products, our brochures and literature are for illustrative purposes only. Floorplan dimensions are nominal. We reserve the right to make changes due to material changes, prices, colors specifications, features at anytime without notice or obligation. Your retailer can provide you with specific information on the home of your choice.



**Cavco Home Center of North Carolina** (910) 716-1701  
106 Innovative Way  
Hamlet, NC 28345  
<https://hamlet.cavcohomecenters.com>

Phoenix  
**Augusta 16562A**



**2 BEDS    2 BATHS    873 SQ. FT**

The Phoenix / Augusta 16562A built by Cavco Hamlet is a charming manufactured home featuring 2 bedrooms, 2 bathrooms, and 873 square feet of thoughtfully designed space. The open-concept layout enhances the connection between the living area, kitchen, and dining space, creating a comfortable atmosphere. The primary suite offers privacy and convenience, while the second bedroom is perfect for guests or an office. The Augusta 16562A is a great blend of comfort and style.



Cavco Home Center of North Carolina (910) 716-1701  
106 Innovative Way  
Hamlet, NC 28345  
<https://hamlet.cavcohomecenters.com>

Phoenix

# The Phoenix 66 16663A



- Ac Ready: Yes
- Front Door: Steel Front Door w/Storm / Shutters Front Door Side
- Window Type: Thermopane Windows
- Water Heater: 40 Gallon Electric Water Heater
- Bathroom Flooring: Vinyl Flooring T/O
- Kitchen Flooring: Vinyl Flooring T/O
- Kitchen Dishwasher: Yes
- Exterior Lighting: Exterior Lights - Front and Rear Door
- Insulation Zone: Zone 3 R30-11-11 Insulation
- Floor Joists: 2x8 Floor Joist
- Other: Exterior Faucet
- Rear Door: Cottage Rear Door
- Ceiling Texture: 8ft Flat Ceilings T/O / Stomped Ceiling
- Water Shut Off Valves: Whole House Water Cut Off
- Bathroom Shower: Garden Tub and Sperate Shower
- Kitchen Faucets: Metal faucets
- Kitchen Cabinetry: Module Craft Cabinet System / 30" Overhead / Adjustable Shelves / Shelf above Refrigerator / Pantry / Utility Shelf
- Interior Lighting: LED Can Lights T/O

Due to the fact that Cavco Hamlet continuously updates and modifies its products, our brochures and literature are for illustrative purposes only. Floorplan dimensions are nominal. We reserve the right to make changes due to material changes, prices, colors specifications, features at anytime without notice or obligation. Your retailer can provide you with specific information on the home of your choice.

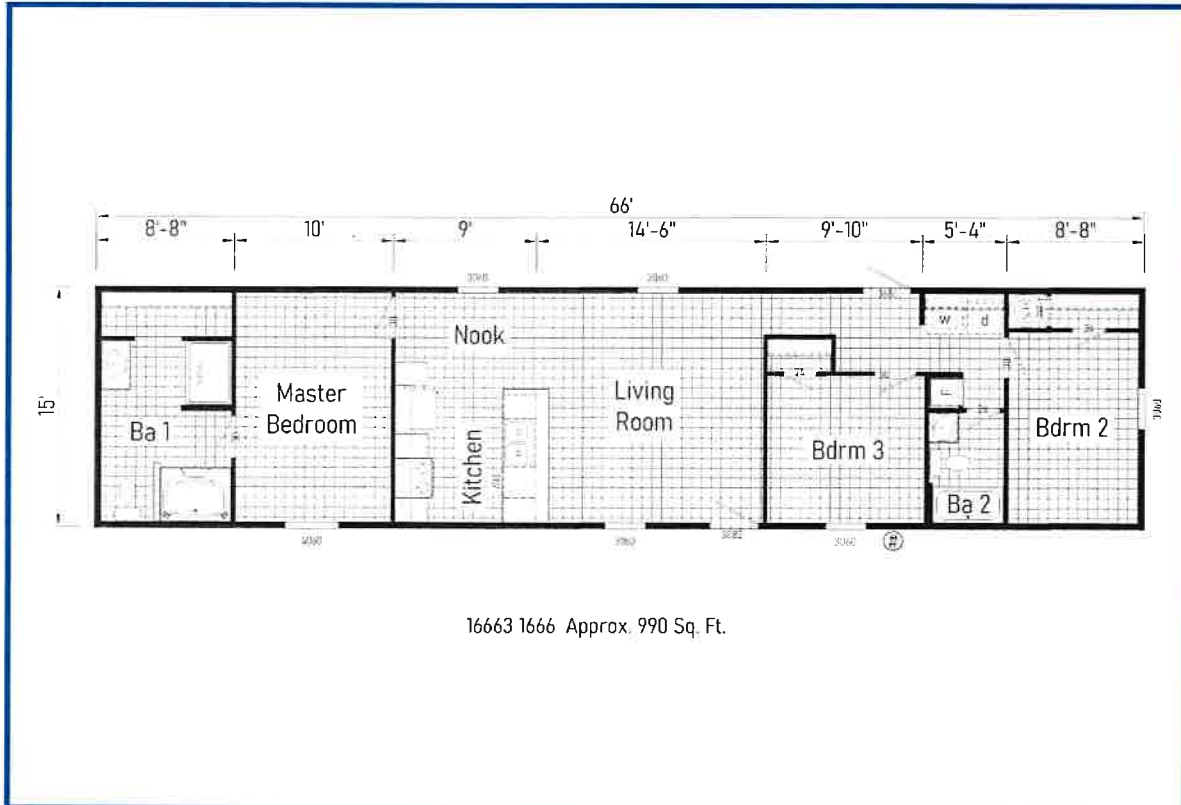


Cavco Home Center of North Carolina (910) 716-1701

106 Innovative Way  
Hamlet, NC 28345

<https://hamlet.cavcohomecenters.com>

Phoenix  
**The Phoenix 66 16663A**



**3 BEDS    2 BATHS    990 SQ. FT**

The Phoenix 66 16663A / The perfect balance of comfort and reliability in an affordable package. Introducing the Phoenix manufactured home series from Cavco Hamlet – a spacious floor plan for the growing family, impeccably designed to be your new forever home. With a layout ideal for entertaining, the open concept living room allows hosts to keep an eye on their meal preparation without missing a minute of the conversation. Complete with three bedrooms, two baths and washer/dryer hookup.



Cavco Home Center of North Carolina (910) 716-1701  
106 Innovative Way  
Hamlet, NC 28345  
<https://hamlet.cavcohomecenters.com>

Phoenix

## The Phoenix 76 16763A



- Ac Ready: Yes
- Front Door: Steel Front Door w/Storm / Shutters Front Door Side
- Window Type: Thermopane Windows
- Water Heater: 40 Gallon Electric Water Heater
- Bathroom Flooring: Vinyl Flooring T/O
- Kitchen Flooring: Vinyl Flooring T/O
- Kitchen Dishwasher: Yes
- Floor Joists: 2x8 Floor Joist
- Other: Exterior Faucet
- Rear Door: Cottage Rear Door
- Ceiling Texture: 8ft Flat Ceilings T/O / Stamped Ceiling
- Water Shut Off Valves: Whole House Water Cut Off
- Bathroom Shower: Garden Tub and Sperate Shower
- Kitchen Faucets: Metal faucets
- Kitchen Cabinetry: Module Craft Cabinet System / 30" Overhead / Adjustable Shelves / Shelf above Refrigerator / Pantry / Utility Shelf
- Interior Lighting: LED Can Lights T/O
- Exterior Lighting: Exterior Lights - Front and Rear Door
- Insulation Zone: Zone 3 R30-11-11 Insulation

Due to the fact that Cavco Hamlet continuously updates and modifies its products, our brochures and literature are for illustrative purposes only. Floorplan dimensions are nominal. We reserve the right to make changes due to material changes, prices, colors specifications, features at anytime without notice or obligation. Your retailer can provide you with specific information on the home of your choice.

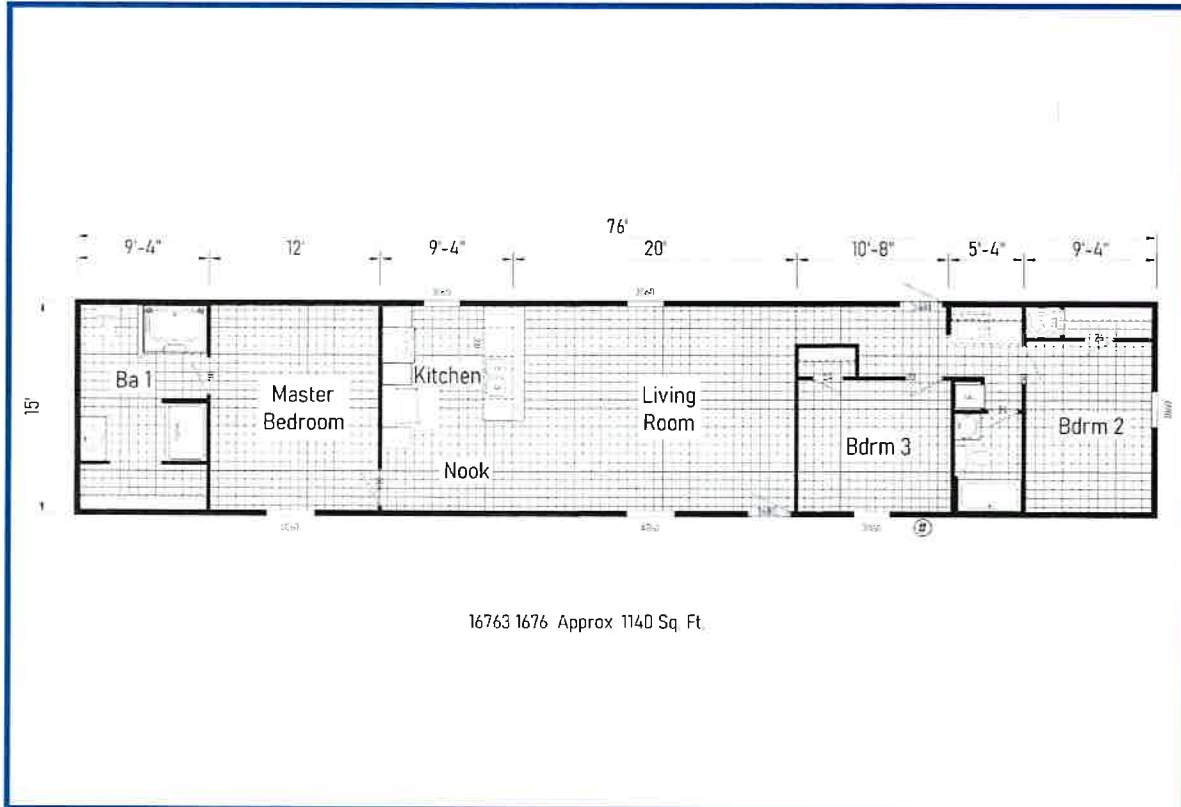


Cavco Home Center of North Carolina (910) 716-1701

106 Innovative Way  
Hamlet, NC 28345

<https://hamlet.cavcohomecenters.com>

Phoenix  
**The Phoenix 76 16763A**



**3 BEDS    2 BATHS    1140 SQ. FT**

The Phoenix 76 16763A is a manufactured home with 1140 square feet of living space, featuring a single section layout. This home has three bedrooms and two bathrooms, providing ample living space for a small family or individuals who prefer extra space. Its compact design ensures easy maintenance and efficient use of space, making it an ideal choice for those who value comfort and convenience. Additionally, the name "Phoenix" could evoke a sense of rebirth, renewal and vitality, adding a positive connotation to the home.



Cavco Home Center of North Carolina (910) 716-1701  
106 Innovative Way  
Hamlet, NC 28345  
<https://hamlet.cavcohomecenters.com>

Phoenix  
32483A



- Ac Ready: Yes
- Front Door: Steel Front Door w/Storm / Shutters Front Door Side
- Window Type: Thermopane Windows
- Water Heater: 40 Gallon Electric Water Heater
- Bathroom Flooring: Vinyl Flooring T/O
- Kitchen Flooring: Vinyl Flooring T/O
- Kitchen Dishwasher: Yes
- Floor Joists: 2x8 Floor Joist
- Other: Exterior Faucet
- Rear Door: Cottage Rear Door
- Ceiling Texture: 8ft Flat Ceilings T/O / Stomped Ceiling
- Water Shut Off Valves: Whole House Water Cut Off
- Bathroom Shower: Garden Tub and Sperate Shower
- Kitchen Faucets: Metal faucets
- Kitchen Cabinetry: Module Craft Cabinet System / 30" Overhead / Adjustable Shelves / Shelf above Refrigerator / Pantry / Utility Shelf
- Interior Lighting: LED Can Lights T/O
- Exterior Lighting: Exterior Lights - Front and Rear Door
- Insulation Zone: Zone 3 R30-11-11 Insulation

Due to the fact that Cavco Hamlet continuously updates and modifies its products, our brochures and literature are for illustrative purposes only. Floorplan dimensions are nominal. We reserve the right to make changes due to material changes, prices, colors specifications, features at anytime without notice or obligation. Your retailer can provide you with specific information on the home of your choice.

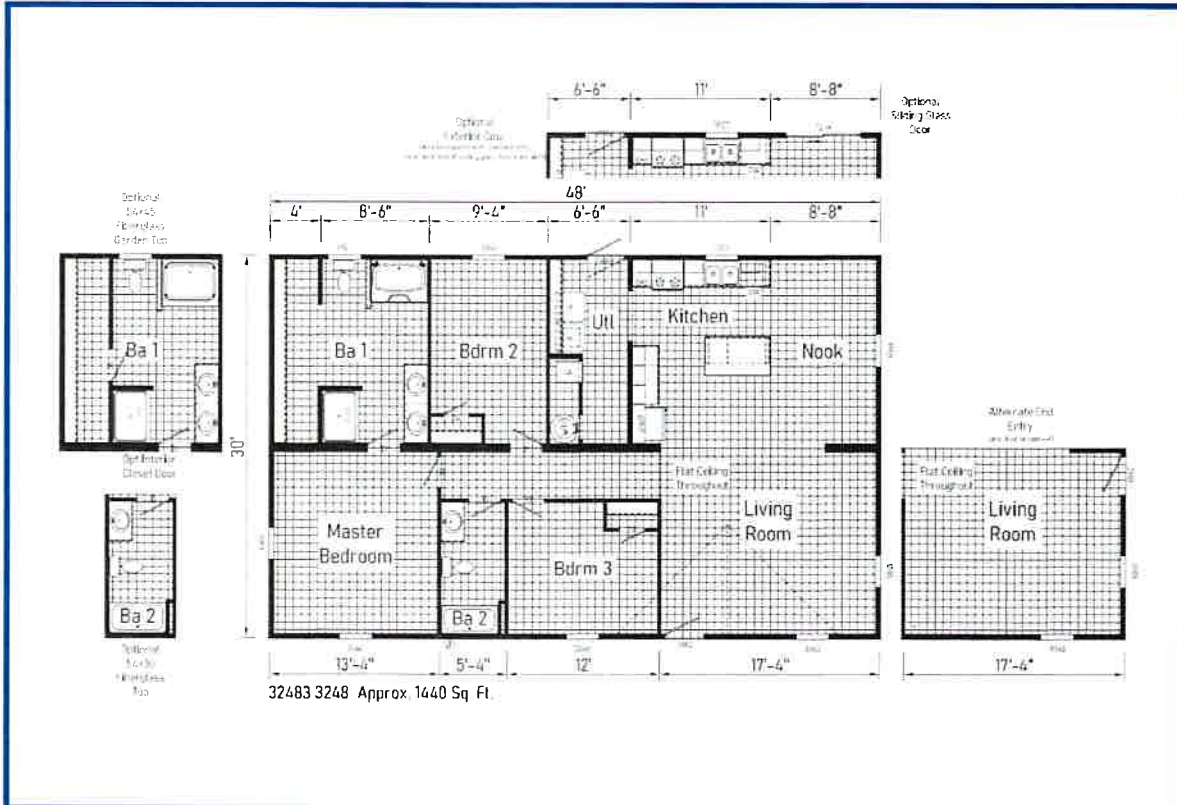


Cavco Home Center of Lafayette  
739 State Rte 52  
Lafayette, TN 37083

(629) 312-0500

<https://lafayette.cavcohomecenters.com>

# Phoenix 32483A



## 3 BEDS    2 BATHS    1440 SQ. FT

The Phoenix / 32483A built by Cavco Hamlet is a spacious manufactured home featuring 3 bedrooms, 2 bathrooms, and 1440 square feet of well-planned living space. The open-concept design seamlessly connects the living room, dining area, and kitchen, creating a welcoming environment. The primary suite offers a relaxing retreat, while the additional bedrooms provide flexibility for family or guests. The 32483A delivers comfort and functionality in a beautifully designed home.



Cavco Home Center of Lafayette  
739 State Rte 52  
Lafayette, TN 37083

(629) 312-0500  
<https://lafayette.cavcohomecenters.com>

Phoenix

## The Phoenix 32563A



- Ac Ready: Yes
- Front Door: Steel Front Door w/Storm / Shutters Front Door Side
- Window Type: Thermopane Windows
- Water Heater: 40 Gallon Electric Water Heater
- Bathroom Flooring: Vinyl Flooring T/O
- Kitchen Flooring: Vinyl Flooring T/O
- Kitchen Dishwasher: Yes
- Floor Joists: 2x8 Floor Joist
- Other: Exterior Faucet
- Rear Door: Cottage Rear Door
- Ceiling Texture: 8ft Flat Ceilings T/O / Stamped Ceiling
- Water Shut Off Valves: Whole House Water Cut Off
- Bathroom Shower: Garden Tub and Sperate Shower
- Kitchen Faucets: Metal faucets
- Kitchen Cabinetry: Module Craft Cabinet System / 30" Overhead / Adjustable Shelves / Shelf above Refrigerator / Pantry / Utility Shelf
- Interior Lighting: LED Can Lights T/O
- Exterior Lighting: Exterior Lights - Front and Rear Door
- Insulation Zone: Zone 3 R30-11-11 Insulation

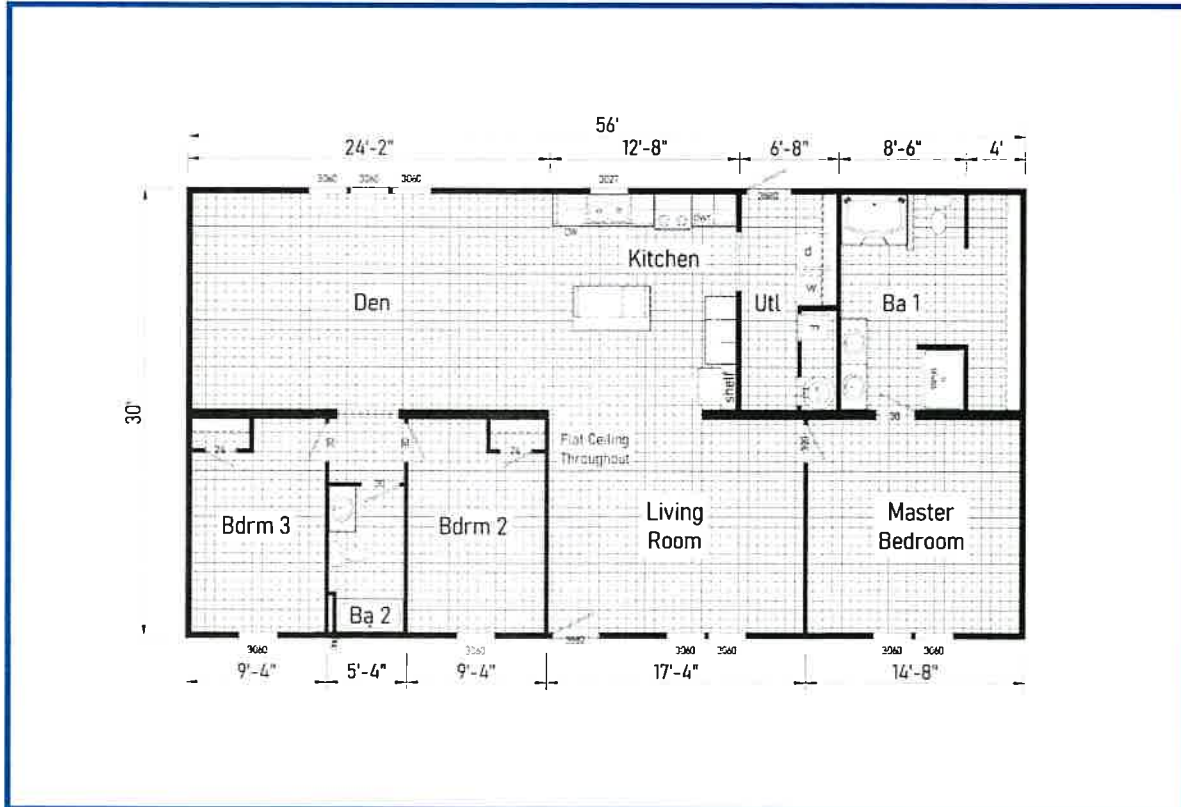
Due to the fact that Cavco Hamlet continuously updates and modifies its products, our brochures and literature are for illustrative purposes only. Floorplan dimensions are nominal. We reserve the right to make changes due to material changes, prices, colors specifications, features at anytime without notice or obligation. Your retailer can provide you with specific information on the home of your choice.



Cavco Home Center of Tifton  
2706 Marshall Dr  
Tifton, GA 31793

(229) 388-1182  
<https://tifton.cavcohomecenters.com>

# Phoenix The Phoenix 32563A



**3 BEDS    2 BATHS    1680 SQ. FT**

The Phoenix / The Phoenix 32563A built by Cavco Hamlet is a spacious manufactured home featuring 3 bedrooms, 2 bathrooms, and 1680 square feet of well-designed living space. The open-concept layout enhances the flow between the living room, kitchen, and dining area, creating an inviting atmosphere. The private primary suite offers a relaxing retreat, while the additional bedrooms provide ample space. The Phoenix 32563A is built for modern comfort and convenience.



Cavco Home Center of Tifton  
2706 Marshall Dr  
Tifton, GA 31793

(229) 388-1182  
<https://tifton.cavcohomecenters.com>

Phoenix

# The Phoenix 32684A



- Ac Ready: Yes
- Front Door: Steel Front Door w/Storm / Shutters Front Door Side
- Window Type: Thermopane Windows
- Water Heater: 40 Gallon Electric Water Heater
- Bathroom Flooring: Vinyl Flooring T/O
- Kitchen Flooring: Vinyl Flooring T/O
- Kitchen Dishwasher: Yes
- Floor Joists: 2x8 Floor Joist
- Other: Exterior Faucet
- Rear Door: Cottage Rear Door
- Ceiling Texture: 8ft Flat Ceilings T/O / Stomped Ceiling
- Water Shut Off Valves: Whole House Water Cut Off
- Bathroom Shower: Garden Tub and Sperate Shower
- Kitchen Faucets: Metal faucets
- Kitchen Cabinetry: Module Craft Cabinet System / 30" Overhead / Adjustable Shelves / Shelf above Refrigerator / Pantry / Utility Shelf
- Interior Lighting: LED Can Lights T/O
- Exterior Lighting: Exterior Lights - Front and Rear Door
- Insulation Zone: Zone 3 R30-11-11 Insulation

Due to the fact that Cavco Hamlet continuously updates and modifies its products, our brochures and literature are for illustrative purposes only. Floorplan dimensions are nominal. We reserve the right to make changes due to material changes, prices, colors specifications, features at anytime without notice or obligation. Your retailer can provide you with specific information on the home of your choice.

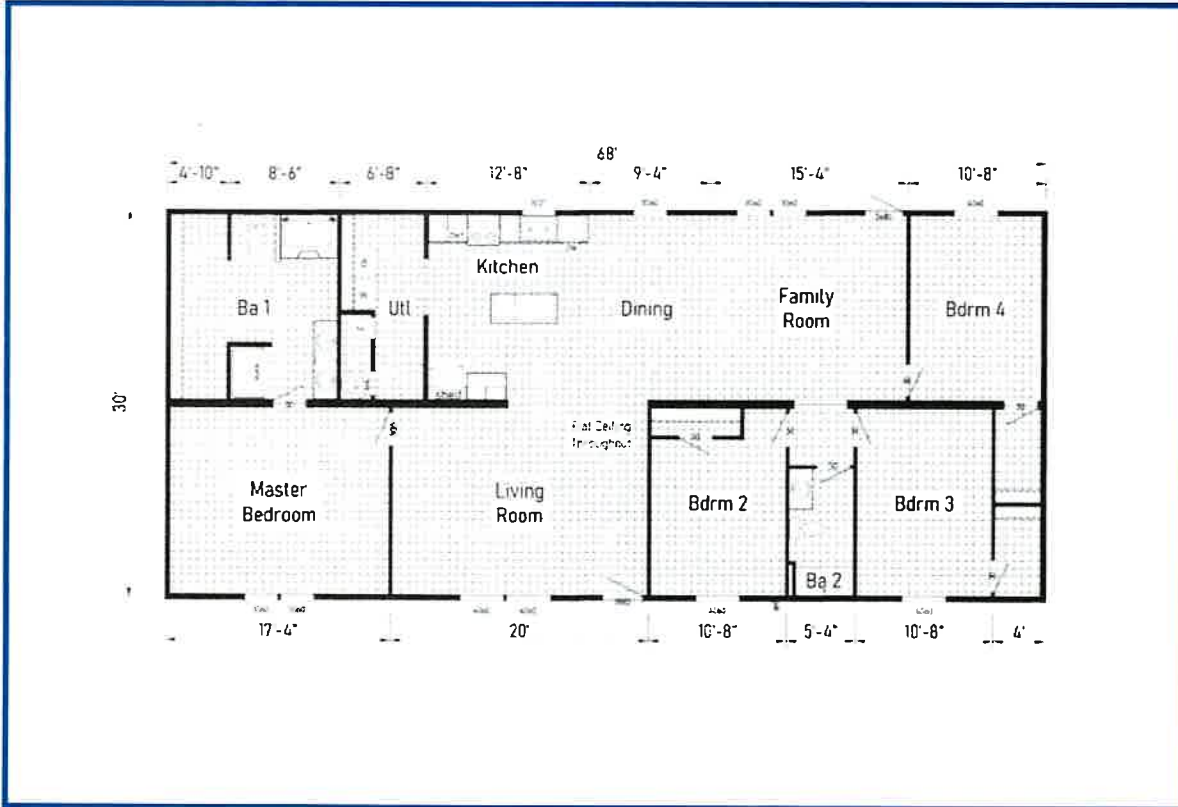


Cavco Home Center of North Carolina (910) 716-1701

106 Innovative Way  
Hamlet, NC 28345

<https://hamlet.cavcohomecenters.com>

# Phoenix The Phoenix 32684A



**4 BEDS    2 BATHS    2040 SQ. FT**

The Phoenix / The Phoenix 32684A built by Cavco Hamlet is a beautifully designed manufactured home offering 4 bedrooms, 2 bathrooms, and 2040 square feet of living space. The spacious layout seamlessly connects the living room, kitchen, and dining area, creating a warm and inviting environment. The private primary suite offers a peaceful retreat, while the additional bedrooms provide flexibility. The Phoenix 32684A is ideal for modern living.



Cavco Home Center of North Carolina (910) 716-1701  
106 Innovative Way  
Hamlet, NC 28345  
<https://hamlet.cavcohomecenters.com>

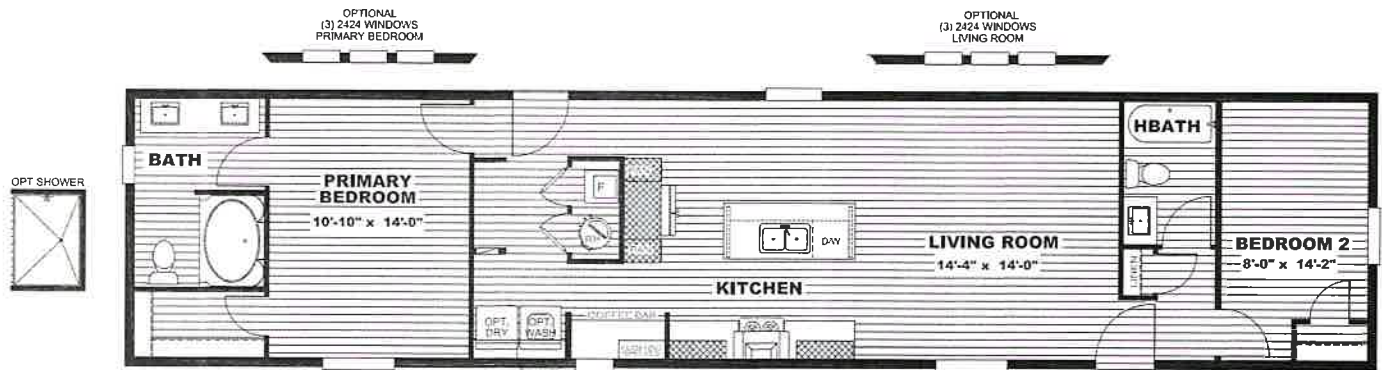


Clayton  
**epic**

EXPERIENCE SERIES

# Tide

2 beds | 2 baths | 1,020 sq. ft. | 16x68



*The home series, floor plans, photos, renderings, specifications, features, pricing, materials and availability shown will vary by retailer and state, and are subject to change without notice.*

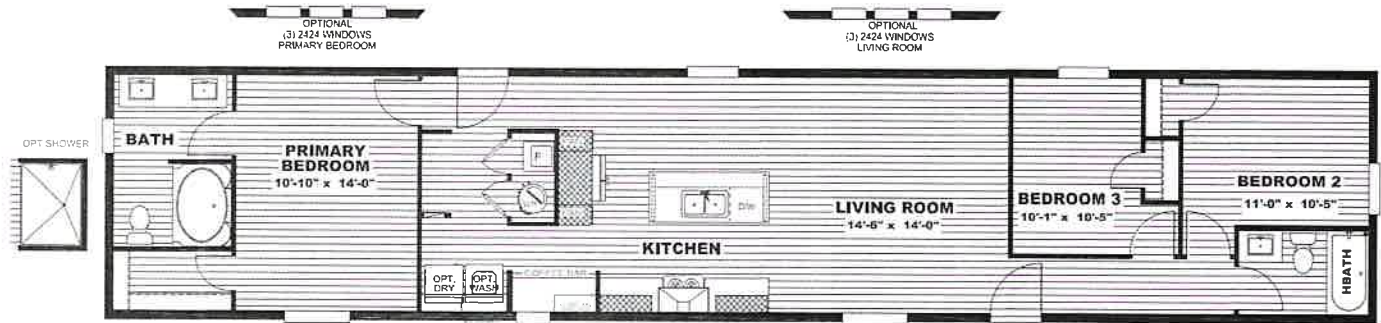


Clayton  
**epic**

EXPERIENCE SERIES

# Mariner

3 beds | 2 baths | 1,140 sq. ft. | 16x76



*The home series, floor plans, photos, renderings, specifications, features, pricing, materials, and availability shown will vary by retailer and state, and are subject to change without notice.*

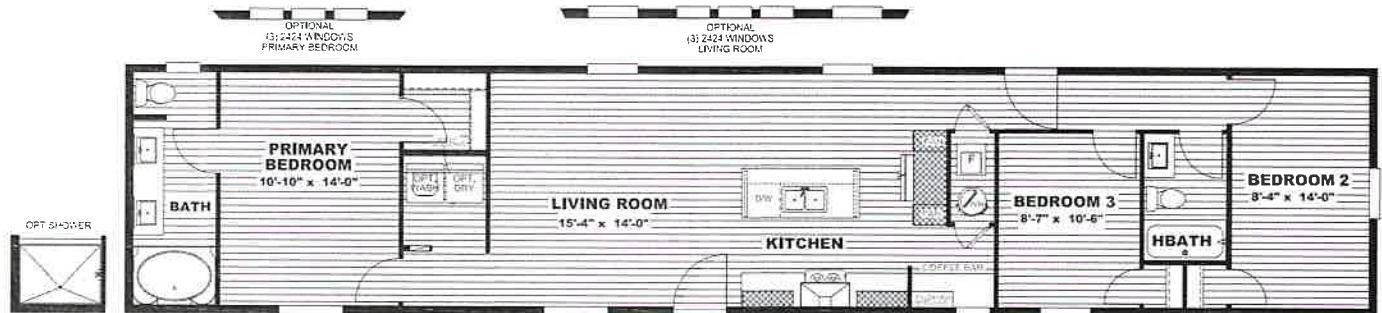


Clayton  
**epic**

EXPERIENCE SERIES

# Voyage

3 beds | 2 baths | 1,140 sq. ft. | 16x76



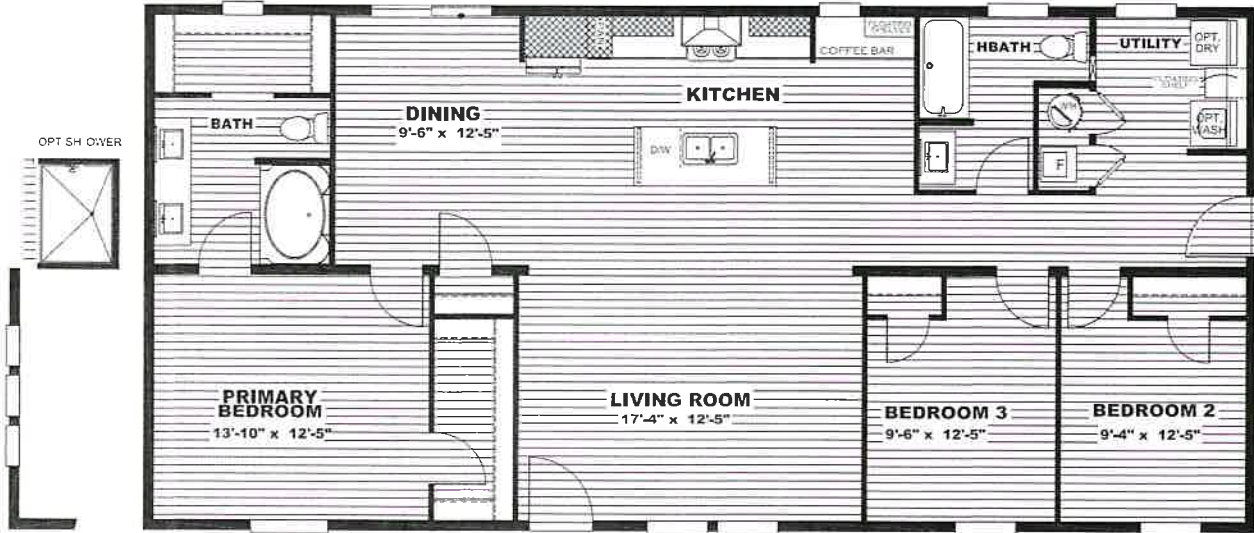
*The home series, floor plans, photos, renderings, specifications, features, pricing, materials and availability shown will vary by retailer and state, and are subject to change without notice.*



EXPERIENCE SERIES

# Explorer

3 beds | 2 baths | 1,475 sq. ft. | 28x56



OPTIONAL  
(3) 2424 WINDO WS



The home series, floor plans, photos, renderings, specifications, features, pricing, materials and availability shown will vary by retailer and state, and are subject to change without notice.



EXPERIENCE SERIES

# Snowcap

4/5 beds | 3 baths | 2,001 sq. ft. | 28x76



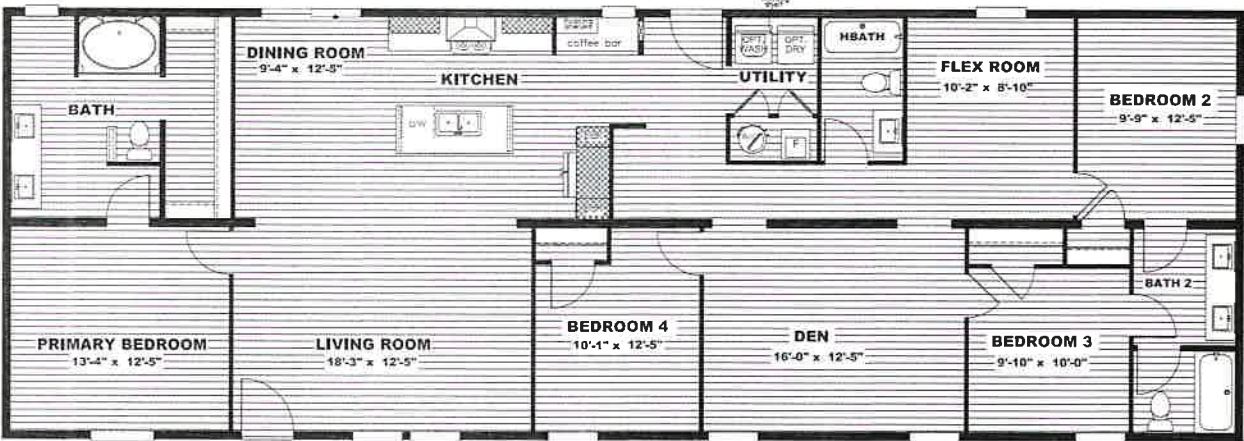
OPT DELUXE BATH SUITE



OPT BEDROOM 5  
10'-2" x 8'-10"



OPT SHOWER



OPTIONAL  
12'x24' WINDOWS



The home series, floor plans, photos, renderings, specifications, features, pricing, materials and availability shown will vary by retailer and state, and are subject to change without notice.



EXPERIENCE SERIES

# Summit

4/5 beds | 3 baths | 2,280 sq. ft. | 32x76



The home series, floor plans, photos, renderings, specifications, features, pricing, materials and availability shown will vary by retailer and state, and are subject to change without notice.



ADVENTURE SERIES

# Tuscany

2 beds | 2 baths | 1,020 sq. ft. | 16x68



The home series, floor plans, photos, renderings, specifications, features, pricing, materials and availability shown will vary by retailer and state, and are subject to change without notice.



Clayton  
**epic**

ADVENTURE SERIES

# Sydney

3 beds | 2 baths | 1,140 sq. ft. | 16x76



Clayton  
**Built**

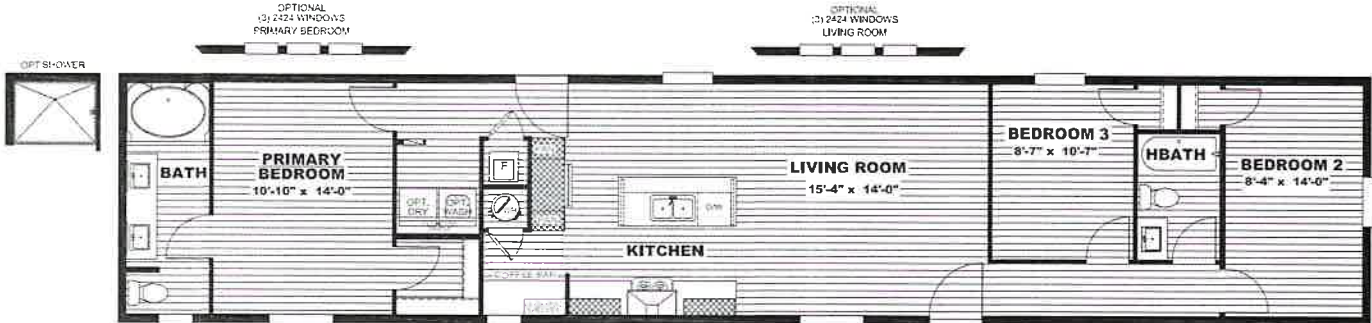
*The home series, floor plans, photos, renderings, specifications, features, pricing, materials and availability shown will vary by retailer and state, and are subject to change without notice.*



ADVENTURE SERIES

# Zion

3 beds | 2 baths | 1,140 sq. ft. | 16x76



The home series, floor plans, photos, renderings, specifications, features, pricing, materials and availability shown will vary by retailer and state, and are subject to change without notice.



Clayton  
**epic**

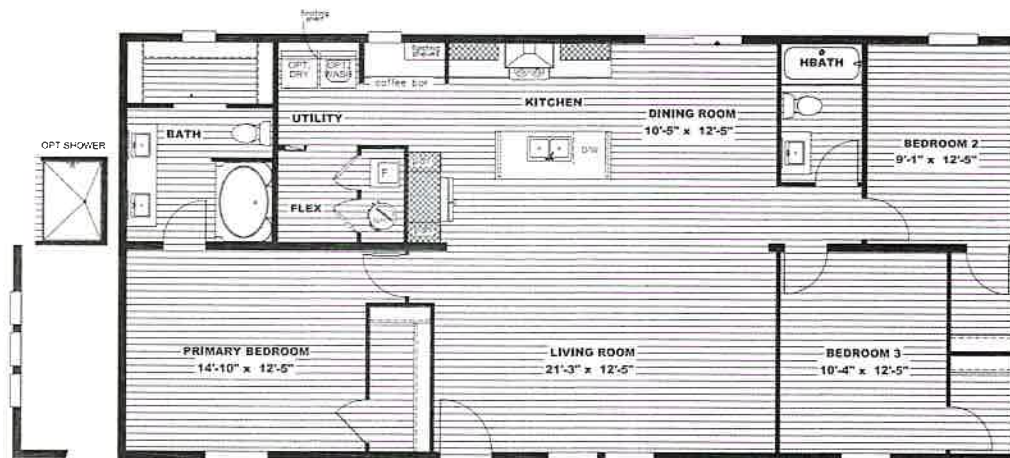
ADVENTURE SERIES

# Rio

3 beds | 2 baths | 1,475 sq. ft. | 28x56



OPT DELUXE BATH SUITE



OPTIONAL  
(3) 24" WINDOWS



*The home series, floor plans, photos, renderings, specifications, features, pricing, materials and availability shown will vary by retailer and state, and are subject to change without notice.*



Clayton  
**epic**

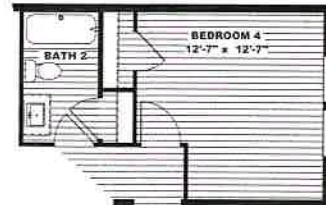
ADVENTURE SERIES

# Fiji

3/4 beds | 2 baths | 1,580 sq. ft. | 28x60



OPTIONAL DELUXE BATH SUITE



OPTIONAL BEDROOM 4



OPTIONAL  
13/24" WINDOWS



*The home series, floor plans, photos, renderings, specifications, features, pricing, materials and availability shown will vary by retailer and state, and are subject to change without notice.*



Clayton  
**epic**

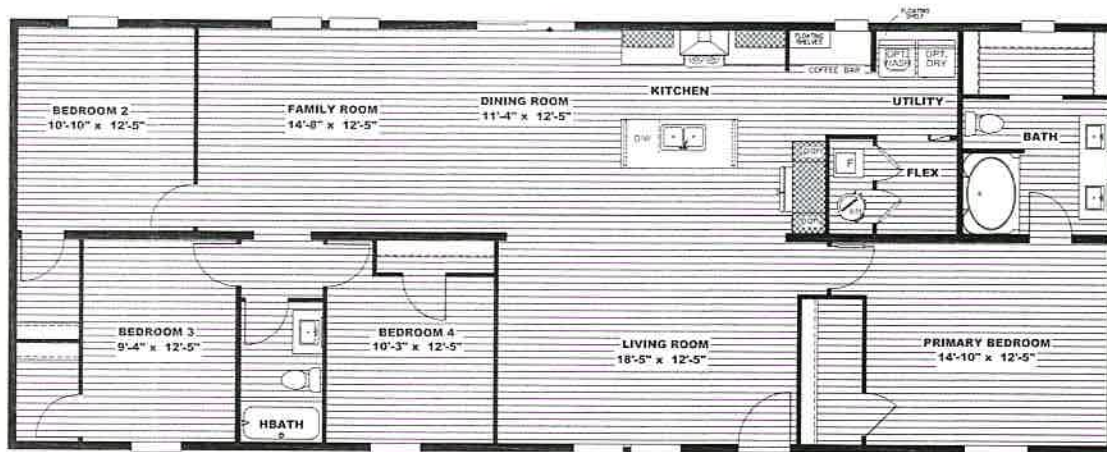
ADVENTURE SERIES

# Morocco

4 beds | 2 baths | 1,791 sq. ft. | 28x68



OPT DELUXE BATH SUITE



OPT SHOWER



OPTIONAL  
(3) 2424 WINDOWS



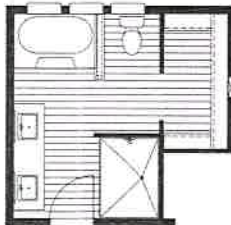
The home series, floor plans, photos, renderings, specifications, features, pricing, materials and availability shown will vary by retailer and state, and are subject to change without notice.



ADVENTURE SERIES

# Rainier

4/5 beds | 3 baths | 2,001 sq. ft. | 28x76

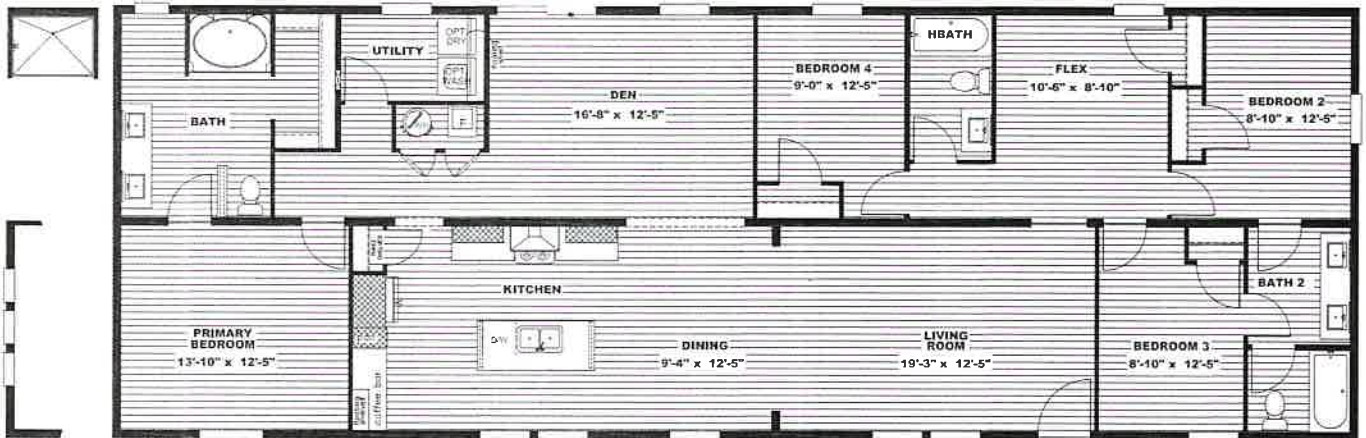


OPT DELUXE BATH SUITE



OPT BEDROOM 5  
10'-6" x 8'-10"

OPT SHOWER



OPTIONAL  
(3) 2424 WINDOWS



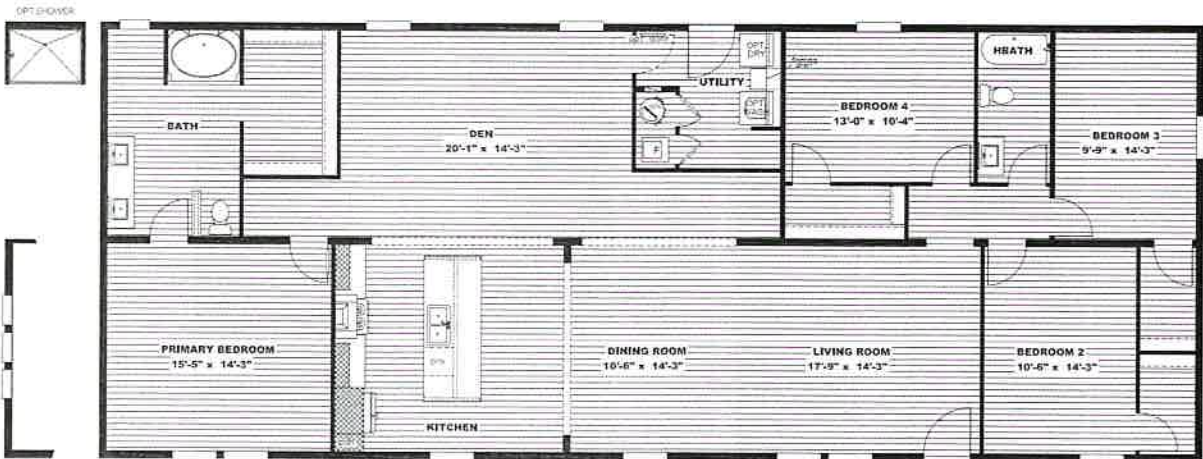
The home series, floor plans, photos, renderings, specifications, features, pricing, materials and availability shown will vary by retailer and state, and are subject to change without notice.



ADVENTURE SERIES

# Everest

4 beds | 2 baths | 2,280 sq. ft. | 32x76



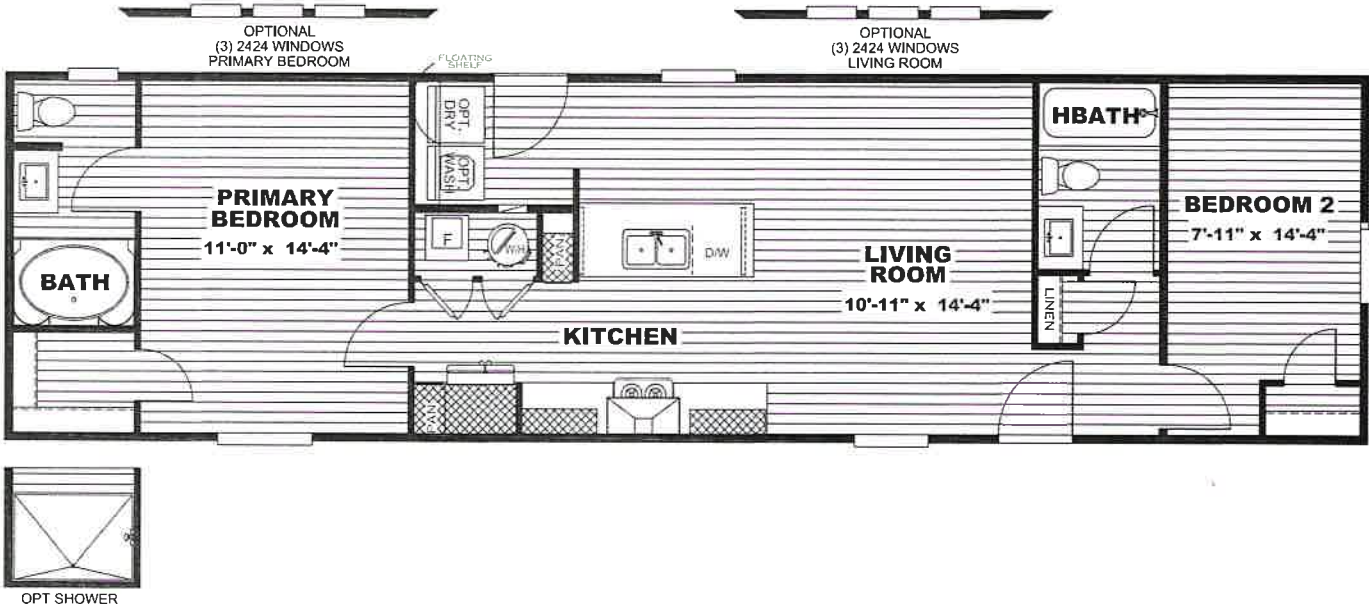
The home series, floor plans, photos, renderings, specifications, features, pricing, materials and availability shown will vary by retailer and state, and are subject to change without notice.



JOURNEY SERIES

# Lewis

2 beds | 2 baths | 840 sq. ft. | 16x56



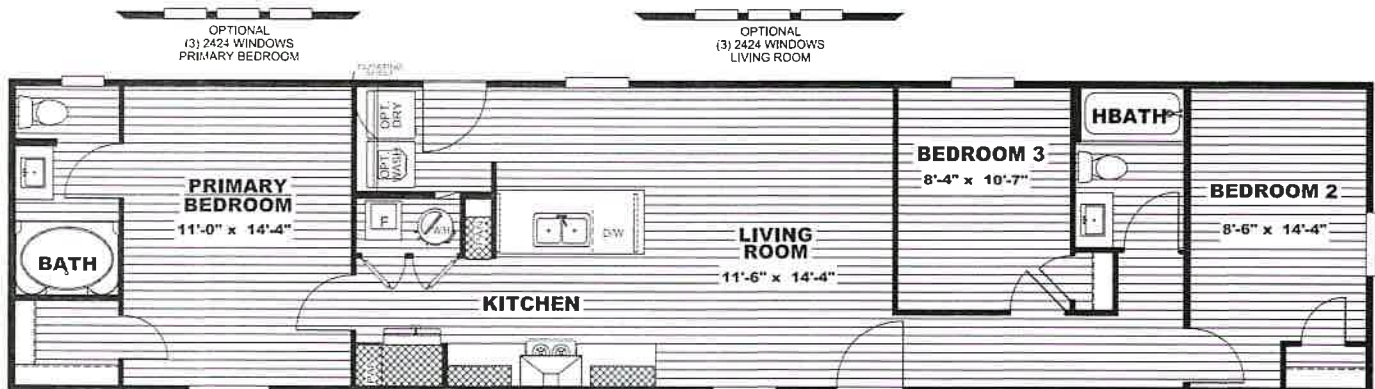


Clayton  
**epic**

JOURNEY SERIES

# Clark

3 beds | 2 baths | 990 sq. ft. | 16x66



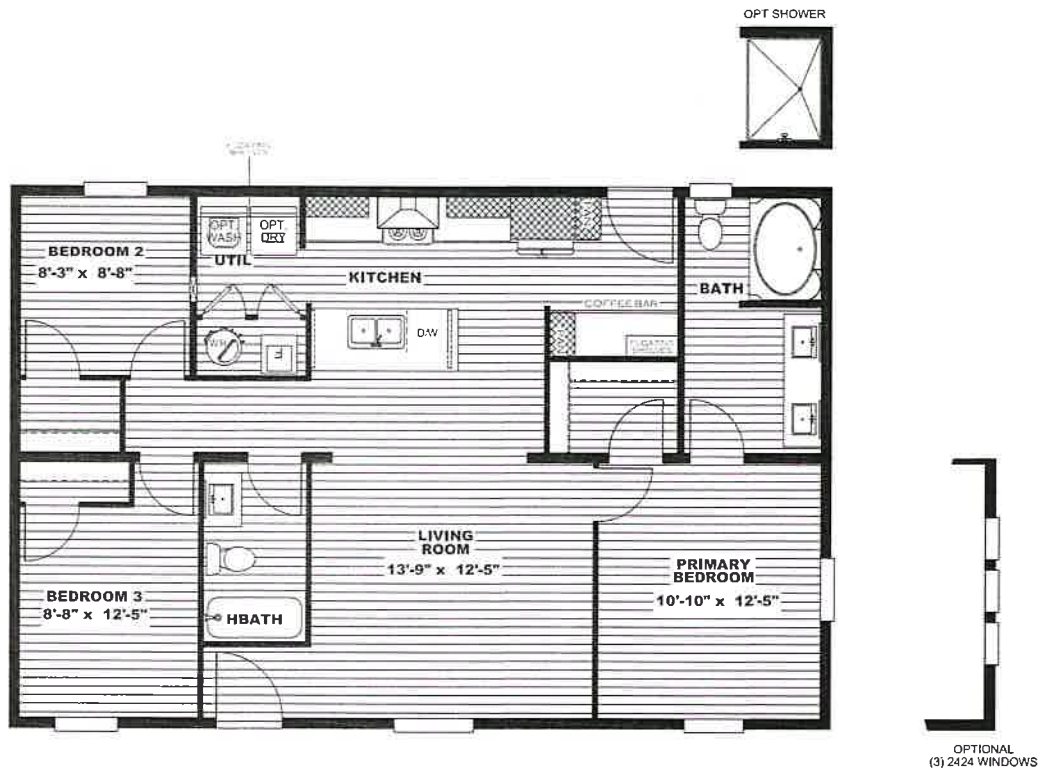
*The home series, floor plans, photos, renderings, specifications, features, pricing, materials and availability shown will vary by retailer and state, and are subject to change without notice.*



JOURNEY SERIES

# Drake

3 beds | 2 baths | 1,053 sq. ft. | 28x40



*The home series, floor plans, photos, renderings, specifications, features, pricing, materials and availability shown will vary by retailer and state, and are subject to change without notice.*

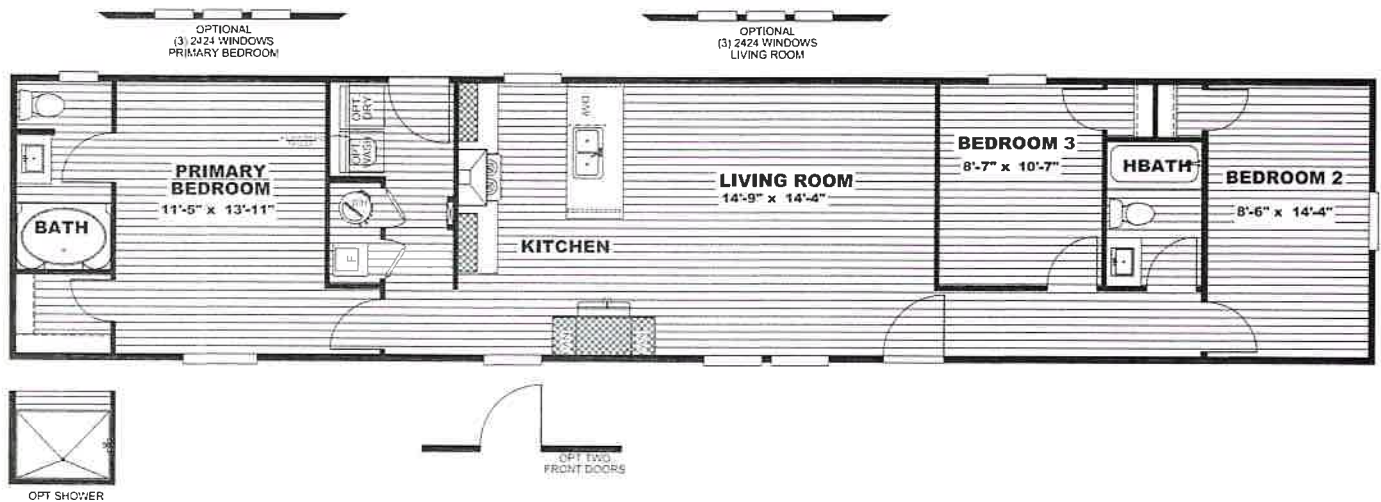


Clayton  
**epic**

JOURNEY SERIES

# Magellan

3 beds | 2 baths | 1,080 sq. ft. | 16x72



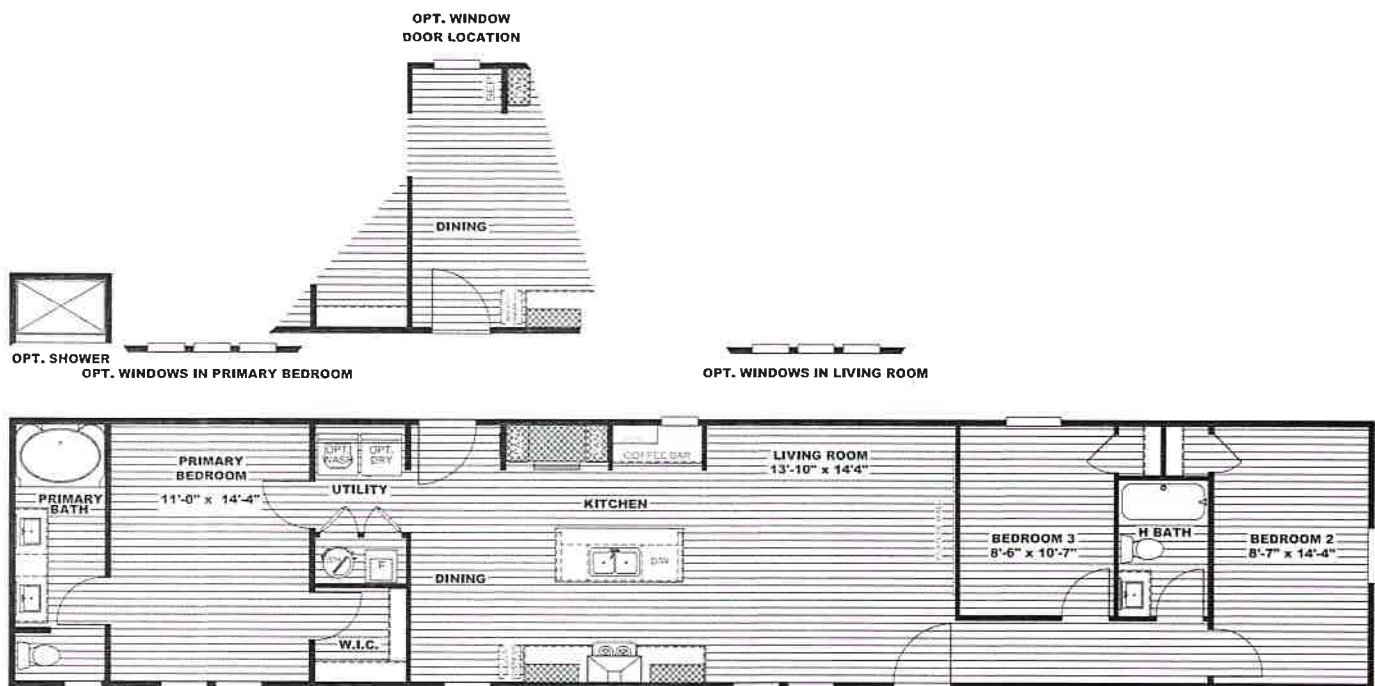
*The home series, floor plans, photos, renderings, specifications, features, pricing, materials and availability shown will vary by retailer and state, and are subject to change without notice.*



JOURNEY SERIES

# Hudson

3 beds | 2 baths | 1,140 sq. ft. | 16x76



*The home series, floor plans, photos, renderings, specifications, features, pricing, materials, and availability shown will vary by retailer and state, and are subject to change without notice.*

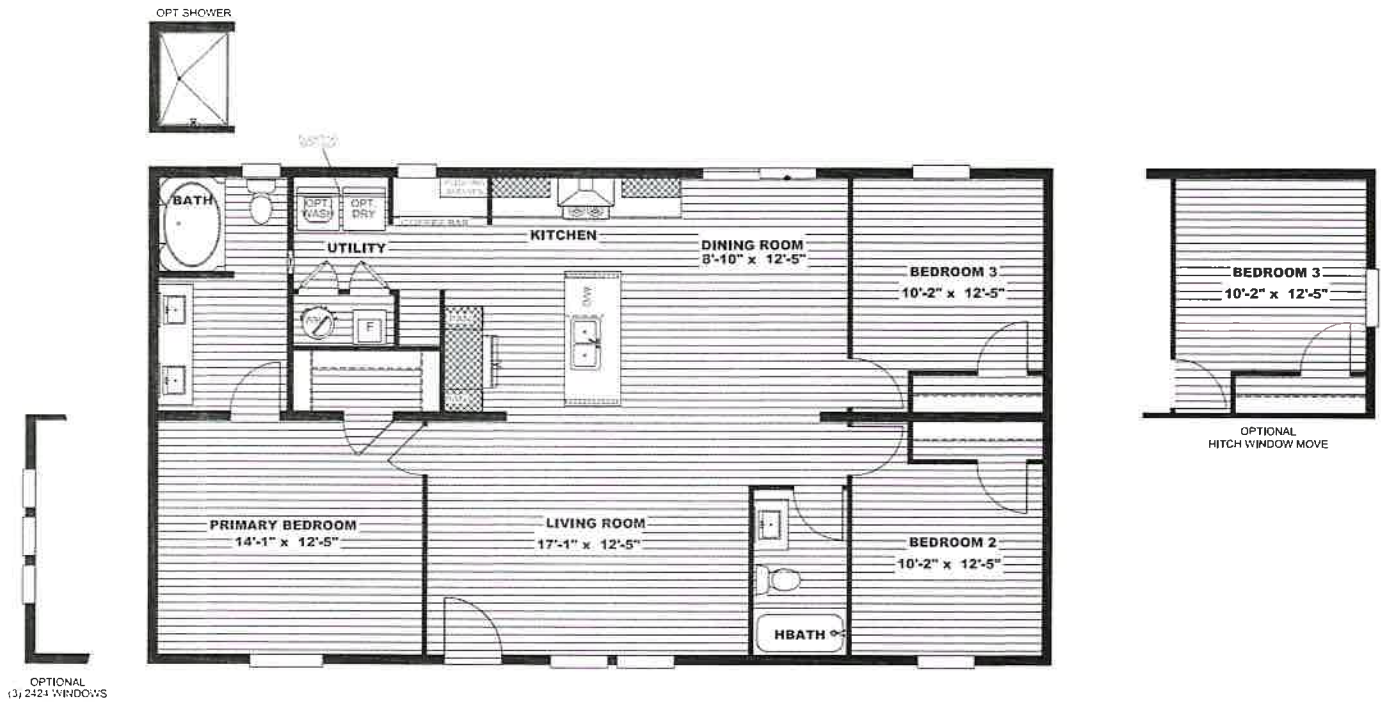


Clayton  
**epic**

JOURNEY SERIES

# DeSoto

3 beds | 2 baths | 1,264 sq. ft. | 28x48



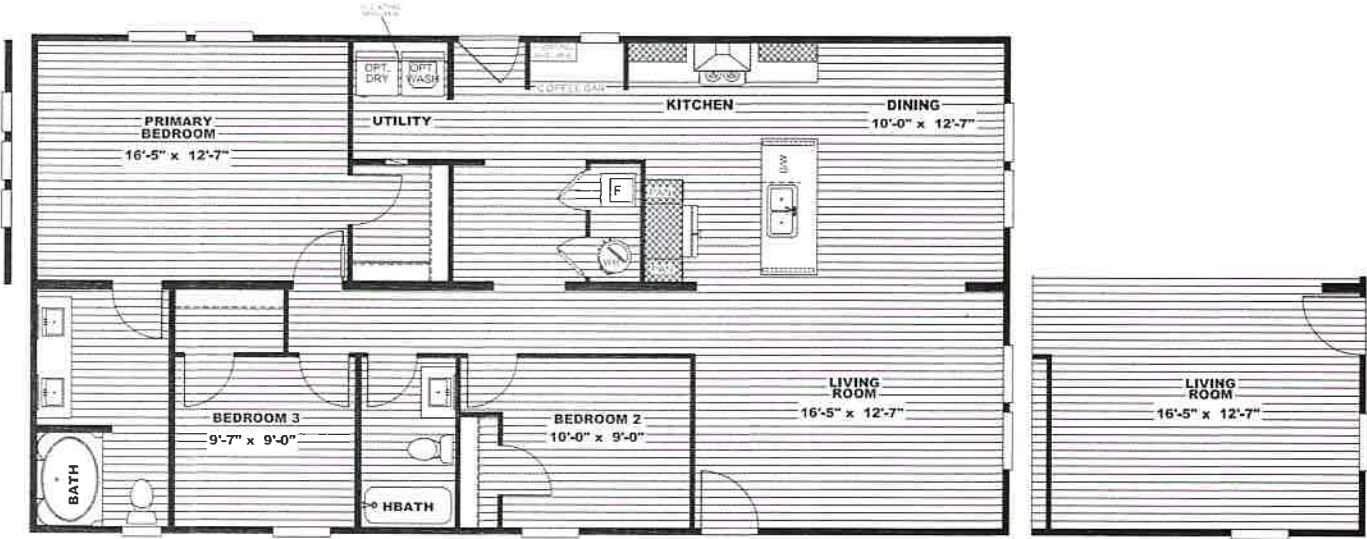
The home series, floor plans, photos, renderings, specifications, features, pricing, materials and availability shown will vary by retailer and state, and are subject to change without notice.



JOURNEY SERIES

# Cook

3 beds | 2 baths | 1,369 sq. ft. | 28x52



OPT HITCH END  
REPLACES STANDARD FRONT DOOR



The home series, floor plans, photos, renderings, specifications, features, pricing, materials and availability shown will vary by retailer and state, and are subject to change without notice.



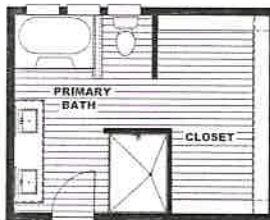


JOURNEY SERIES

# Crockett

3 beds | 2 baths | 1,791 sq. ft. | 28x68

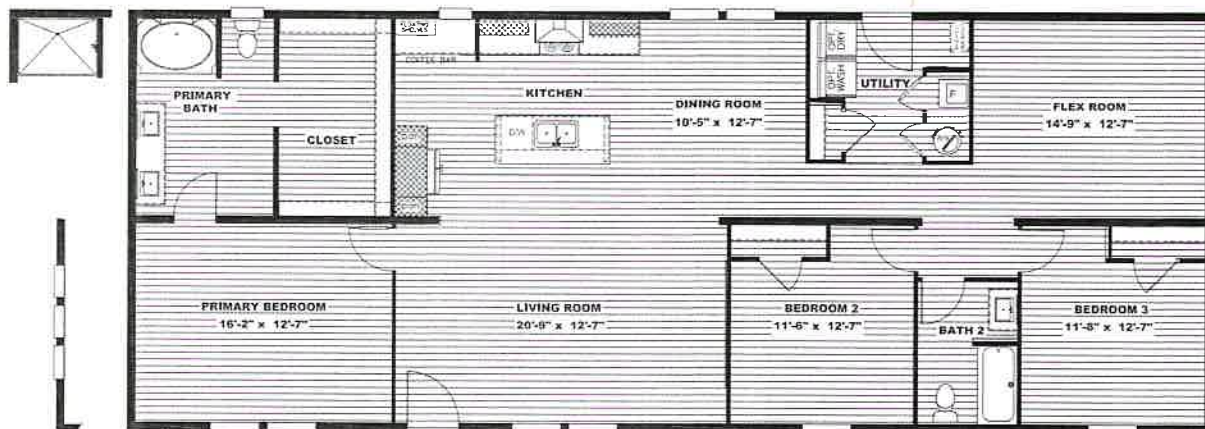
OPTIONAL DELUXE BATH SUITE



OPTIONAL 4 BEDROOM



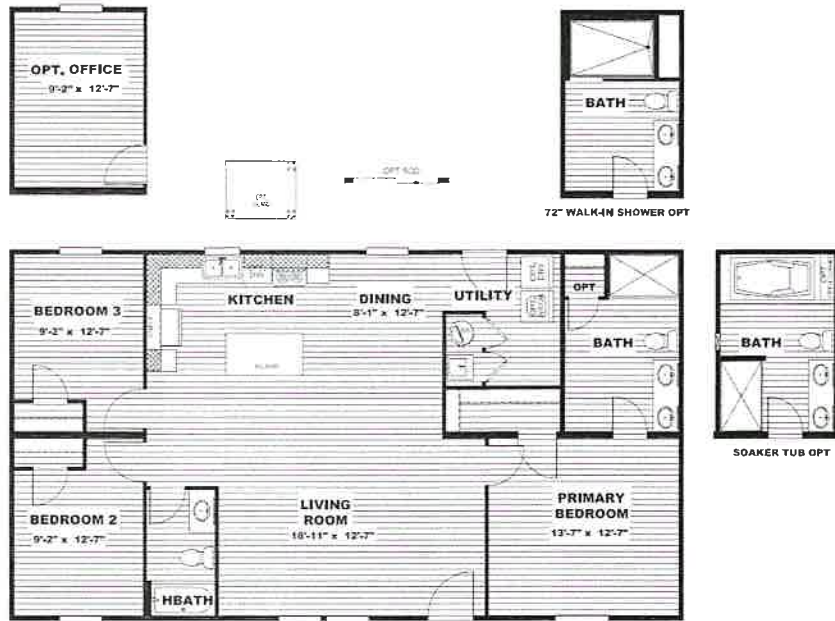
OPTIONAL SLIDING GLASS DOOR



The home series, floor plans, photos, renderings, specifications, features, pricing, materials and availability shown will vary by retailer and state, and are subject to change without notice.



**Ultra Flex 28x48** UPF28483A / 3 beds / 2 baths / 1,475 sq. ft. / 28x56





**Ultra Flex 28x52** UPF28523A / 3 beds / 2 baths / 1,369 sq. ft. / 28x52



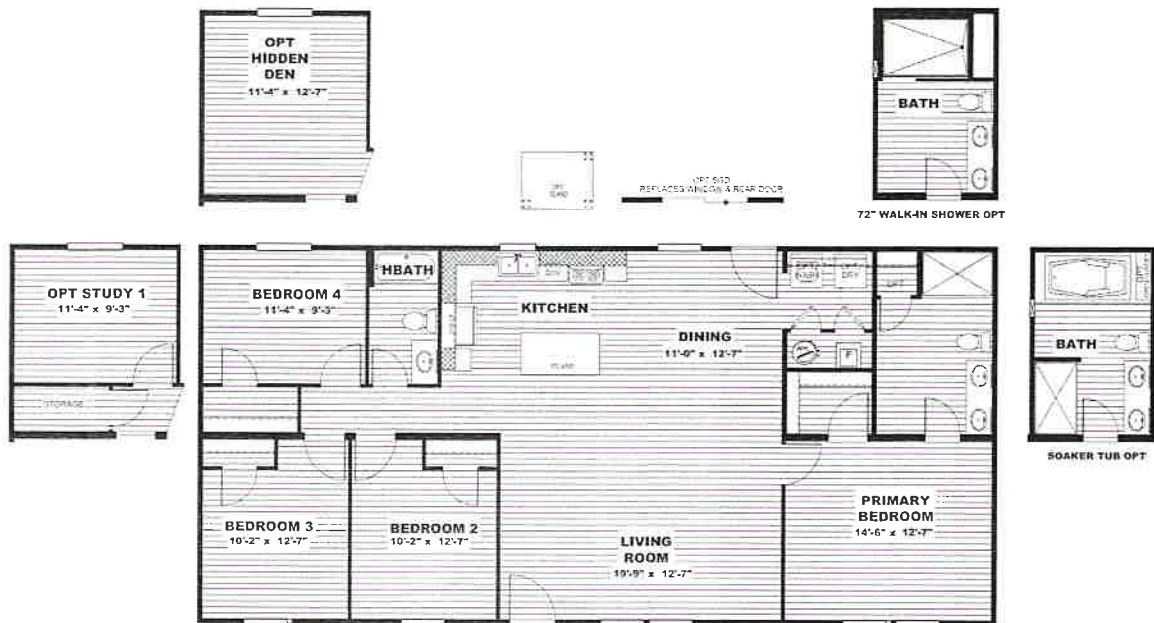


**Ultra Flex 28x56 3B** UPF28563A / 3 beds / 2 baths / 1,474 sq. ft. / 28x56





**Ultra Flex 28x56 4B** UPF28564A / 4 beds / 2 baths / 1,475 sq. ft. / 28x56



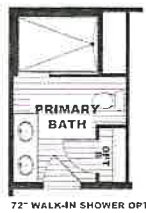
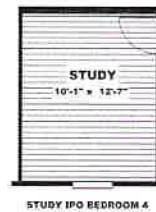


**Ultra Flex 28x60** UPF28603A / 3 beds / 2baths / 1,580 sq. ft. / 28x60



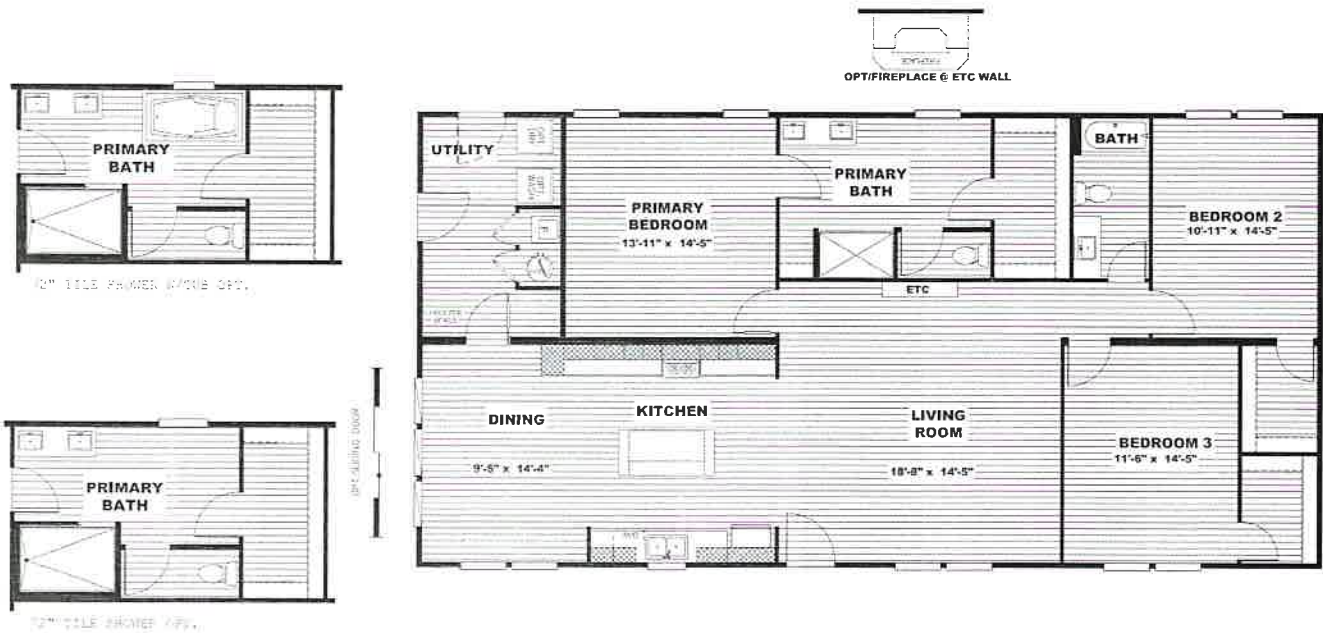


**Ultra Flex 28x68** UPF28684AH / 4 beds / 2 baths / 1,790 sq. ft. / 28x68





**Ultra Flex Jewel** UPF32603A / 3 beds / 2 baths / 1,800 sq. ft. / 32x60



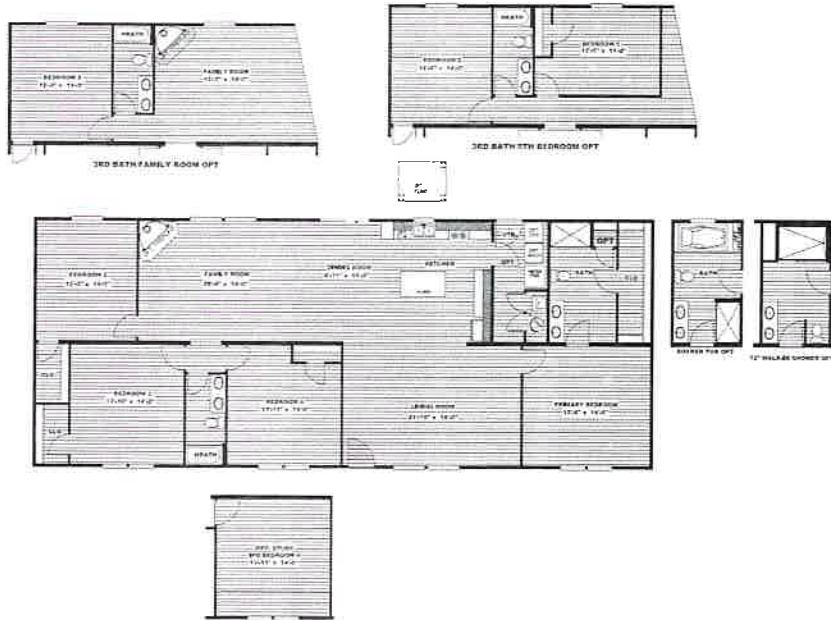


**Ultra Flex 28x76** UPF28764B / 4 beds / 2 baths / 2,001 sq. ft. / 28x76





**Ultra Flex Big Boy** UPF32764A / 4 beds / 2 baths / 2,280 sq. ft. / 32x76

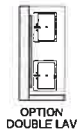
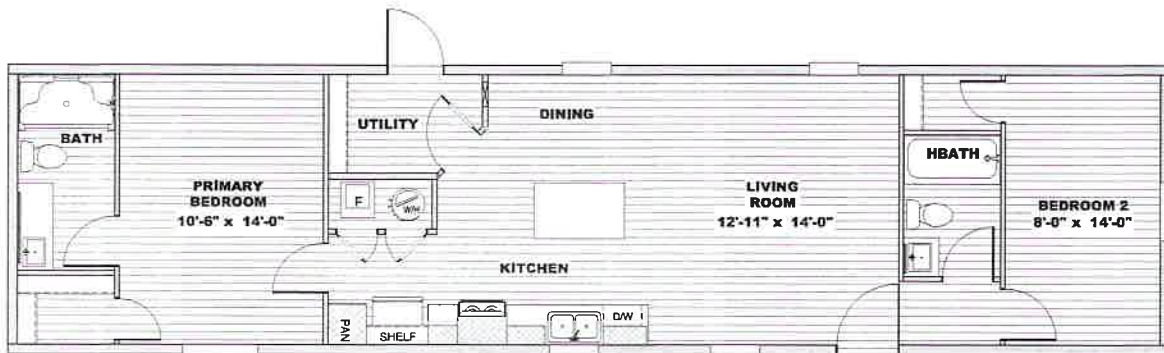


Clayton  
**HORIZON**

Built to keep life moving forward.

# Atlas

HZR16602AH / 2 beds / 2 baths / 900 sq. ft. / 16x60



OPTION  
DOUBLE LAV



**CLAYTON RETAIL PARTNER EXCLUSIVE**

*The home series, floor plans, photos, renderings, specifications, features, pricing, materials and availability shown will vary by retailer and state, and are subject to change without notice.*



Clayton  
**HORIZON**

Built to keep life moving forward.

# Beacon

HZN16663AH / 3 beds / 2 baths / 990 sq. ft. / 16x66



*The home series, floor plans, photos, renderings, specifications, features, pricing, materials and availability shown will vary by retailer and state, and are subject to change without notice.*

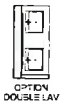
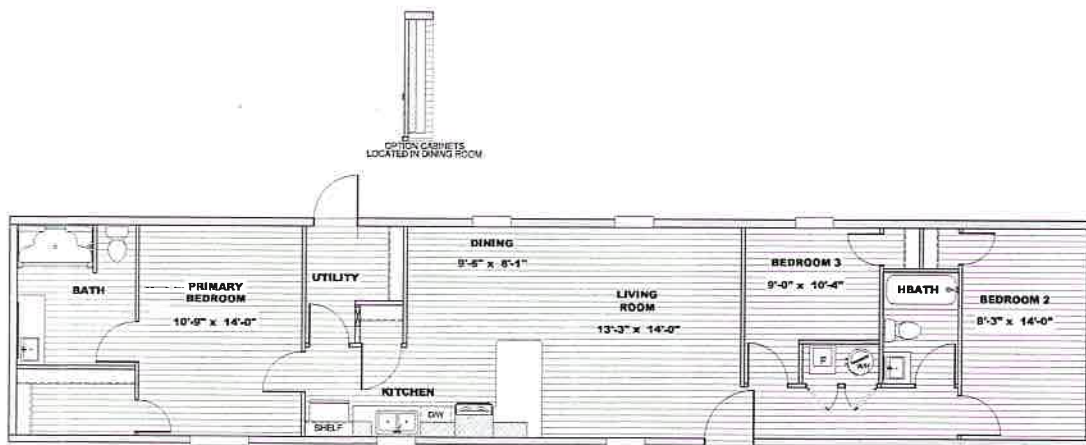


Clayton  
**HORIZON**

Built to keep life moving forward.

# Oasis

HZR16723AH / 3 beds / 2 baths / 1,080 sq. ft. / 16x72



**CLAYTON RETAIL PARTNER EXCLUSIVE**

*The home series, floor plans, photos, renderings, specifications, features, pricing, materials and availability shown will vary by retailer and state, and are subject to change without notice.*



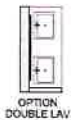
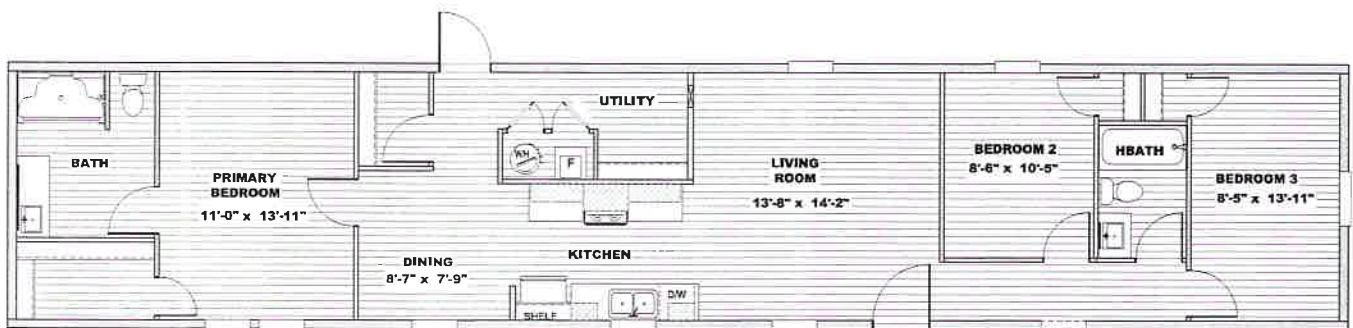
Clayton

HORIZON

Built to keep life moving forward.

# Northstar

HZN16763AH / 3 beds / 2 baths / 1,140 sq. ft. / 16x76



The home series, floor plans, photos, renderings, specifications, features, pricing, materials and availability shown will vary by retailer and state, and are subject to change without notice.



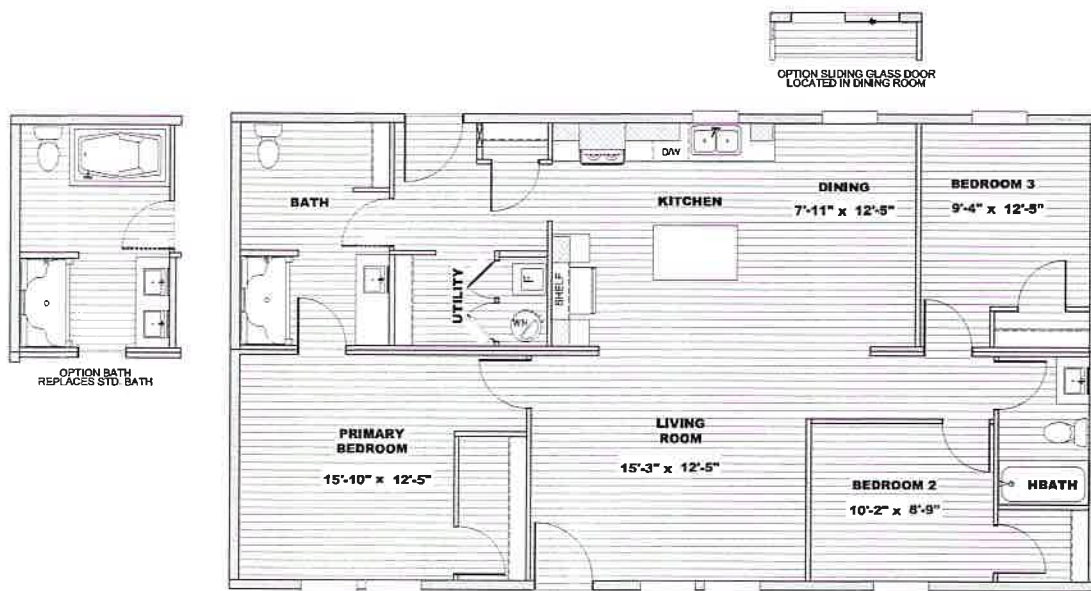
Clayton.

# HORIZON

Built to keep life moving forward.

## Vista

HZN28483AH / 3 beds / 2 baths / 1,264 sq. ft. / 28x48



*The home series, floor plans, photos, renderings, specifications, features, pricing, materials and availability shown will vary by retailer and state, and are subject to change without notice.*



Clayton

HORIZON

Built to keep life moving forward.

# Aspire

HZN28563AH / 3 beds / 2 baths / 1,475 sq. ft. / 28x56



*The home series, floor plans, photos, renderings, specifications, features, pricing, materials and availability shown will vary by retailer and state, and are subject to change without notice.*

clayton **Built**

Clayton

HORIZON

Built to keep life moving forward.

# Element

HZR28563AH / 3 beds / 2 baths / 1,475 sq. ft. / 28x56



CLAYTON RETAIL PARTNER EXCLUSIVE

*The home series, floor plans, photos, renderings, specifications, features, pricing, materials and availability shown will vary by retailer and state, and are subject to change without notice.*

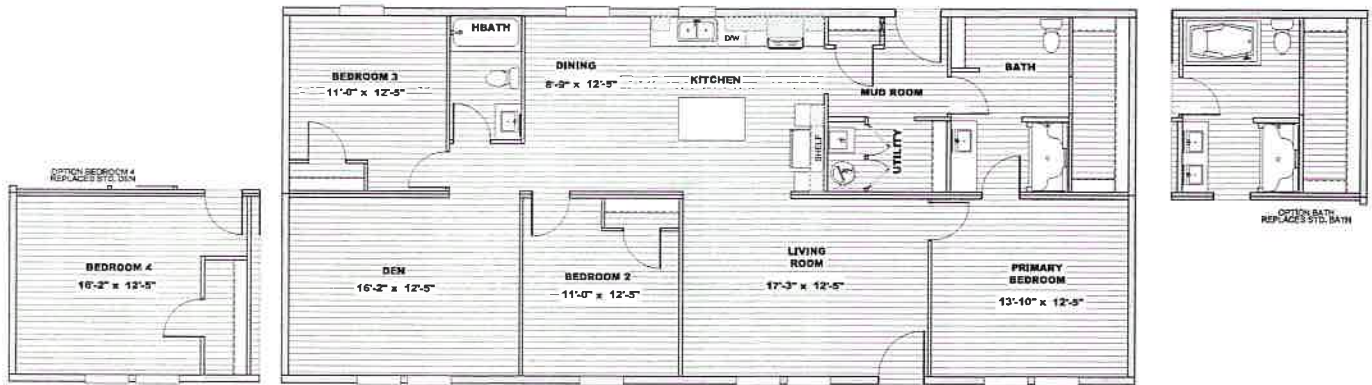


Clayton  
**HORIZON**

Built to keep life moving forward.

# Haven

HZN28603AH / 3 beds / 2 baths / 1,580 sq. ft. / 28x60



*The home series, floor plans, photos, renderings, specifications, features, pricing, materials and availability shown will vary by retailer and state, and are subject to change without notice.*



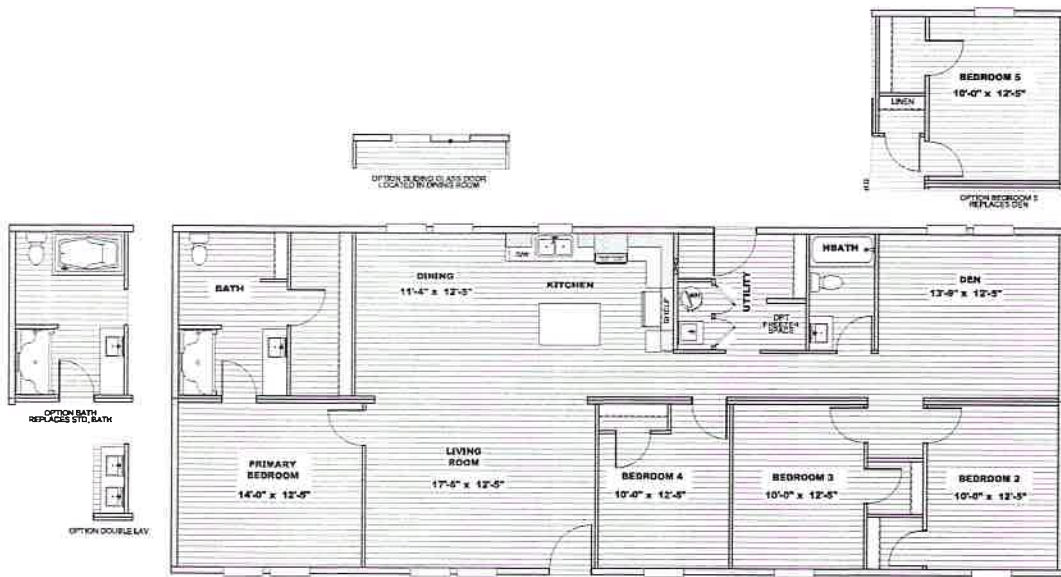
Clayton

HORIZON

Built to keep life moving forward.

# Eclipse

HZR28684AH / 4 beds / 2 baths / 1,790 sq. ft. / 28x68



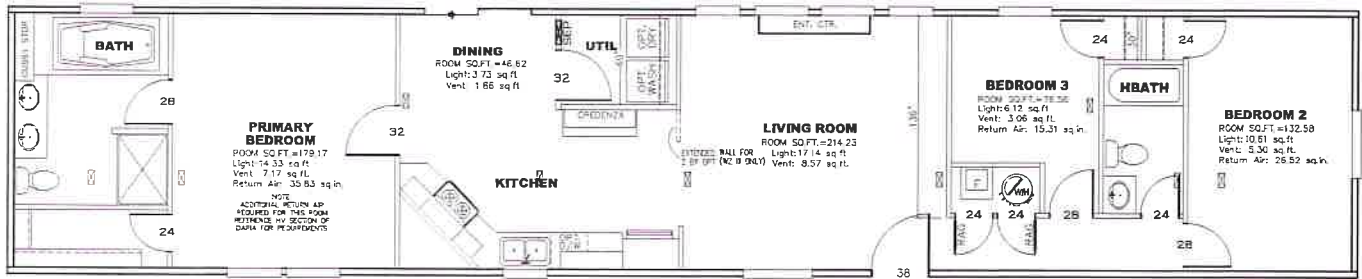
CLAYTON RETAIL PARTNER EXCLUSIVE

*The home series, floor plans, photos, renderings, specifications, features, pricing, materials and availability shown will vary by retailer and state, and are subject to change without notice.*





**Ultra A-Plus 16X76** 29UXL16763PH25 / 3 beds / 2 baths / 1,140 sq. ft. / 16X76



**2 BEDROOM OPT.**



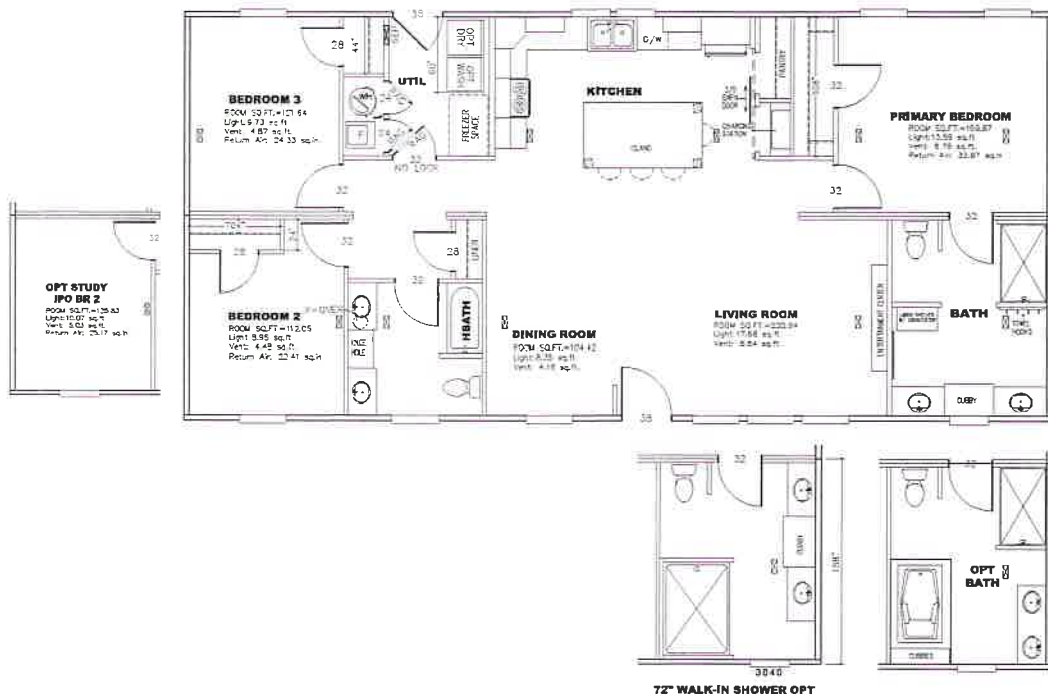
**This home is built to eBuilt standards.**

The home series, floor plans, photos, renderings, specifications, features, pricing, materials and availability shown will vary by retailer and state, and are subject to change without notice.





**Ultra Island Breeze 56'** 29UXL28563IH25 / 3 beds / 2 baths / 1,475 sq. ft. / 28X56



**This home is built to eBuilt standards.**

The home series, floor plans, photos, renderings, specifications, features, pricing, materials and availability shown will vary by retailer and state, and are subject to change without notice.

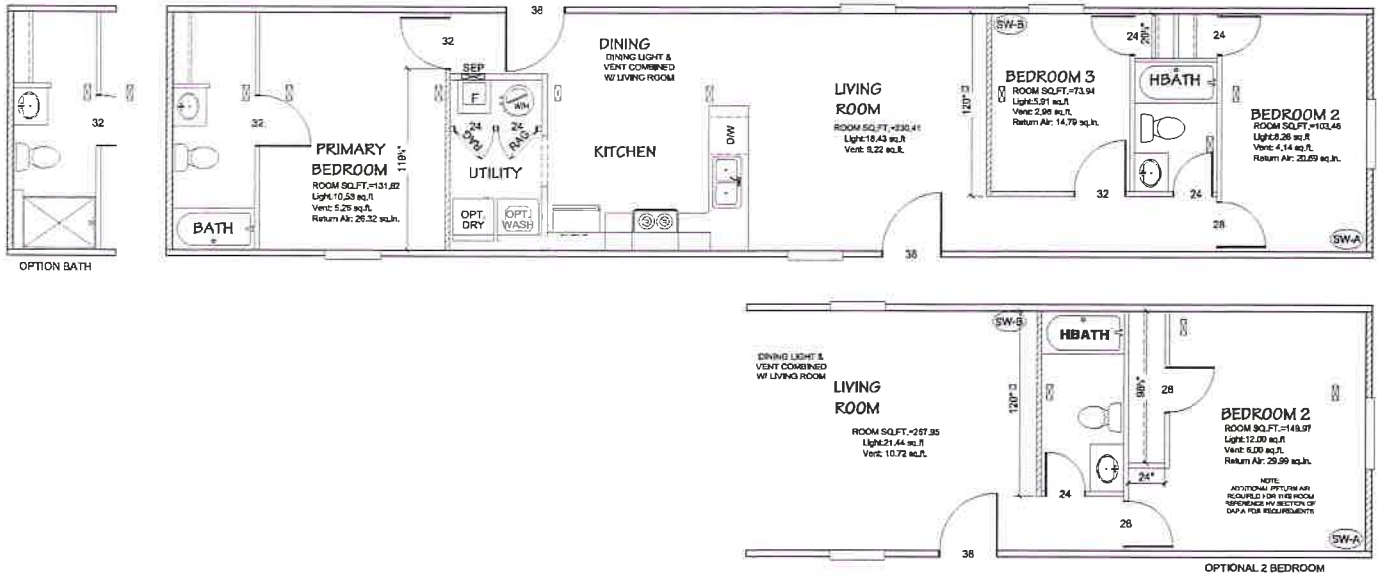






**Legend**

**Legend 14x66** 29LEG14663AH25 / 3 beds / 2 baths / 902 sq. ft. / 14x66



**Clayton**  
oxford

**This home is built to eBuilt standards.**

The home series, floor plans, photos, renderings, specifications, features, pricing, materials and availability shown will vary by retailer and state, and are subject to change without notice.

**Clayton Built**



**Legend**

**Legend 16x72 Coastal Breeze I** 29LEG16723AH25 / 3 beds / 2 baths / 1,128 sq. ft. / 16x72



**Clayton**  
oxford

**This home is built to eBuilt standards.**

The home series, floor plans, photos, renderings, specifications, features, pricing, materials and availability shown will vary by retailer and state, and are subject to change without notice.

**Clayton Built**